

POWERSMART[®]

INSTRUCTION MANUAL

159cc Engine Instruction Manual



PROBLEMS? QUESTIONS?

DO NOT RETURN TO STORE
CALL OUR CUSTOMER HELP LINE

(800)791-9458 Mon-Fri 9-5 EST



Have product questions or need technical support? Please feel free to contact us!

Website: www.Amerisuninc.com
www.powersmartusa.com

Toll free: 1-800-791-9458 Mon-Fri 9-5 EST
Email: support@amerisuninc.com

CONTENTS

Technical data.....	3
Introduction.....	4
Safety information.....	4
Knowing your engine.....	6
Engine preparation.....	7
Maintenance.....	9
Storage/Transporting.....	11
Exploded view & parts list.....	13
Warranty.....	17

TECHNICAL DATA

Engine type:	4 stroke, OHV, single cylinder with forced air cooling system
Displacement:	159 cc
Bore x stroke:	65 x 48 mm
Net. power:	2.7 KW/3600 rpm
Net. torque:	8.5 N.m/2500 rpm
Fuel consumption:	≤395 g/KW.h
Idle speed:	2200±150 rpm
Compression ratio:	7.6: 1
Lubrication mode:	Splash
Starting mode:	Recoil start
Rotation:	Anti-clockwise (from P.T.O. side)
Valve clearance:	Intake: 0.10 - 0.15 mm, Exhaust: 0.15 - 0.20 mm
Spark plug clearance:	0.7- 0.8 mm
Oil type:	SAE 10W-30
Oil capacity:	17 fl.oz
Fuel tank capacity:	0.26 Gallon

The power rating of the engine indicated in this document is the net power output tested on a production engine for the engine model and measured in accordance with SAE J1349 at 3,600 rpm (Net Power) and at 2,500 rpm (Max. Net Torque). Mass production engines may vary from this value.

Actual power output for the engine installed in the final machine will vary depending on numerous factors, including the operating speed of the engine in application, environmental conditions, maintenance, and other variables.

INTRODUCTION

Thank You for Purchasing a PowerSmart® Product. This manual provides information regarding the safe operation and maintenance of this product. Every effort has been made to ensure the accuracy of the information in this manual. PowerSmart® reserves the right to change this product and specifications at any time without prior notice.

Please keep this manual available to all users during the entire life of the engine.



This manual contains special messages to bring attention to potential safety concerns, engine damage as well as helpful operating and servicing information. Please read all the information carefully to avoid injury and machine damage.

QUESTIONS? PROBLEMS?

Please contact our Customer Service Dept. with any questions and/or comments, either by Email: support@amerisuninc.com, or Toll Free at (800) 791-9458. We are available Mon-Fri 9am-5pm EST to help solve any issues that you might encounter.

NOTICE REGARDING EMISSIONS

Engines that are certified to comply with U.S. EPA emission regulations for SORE (Small Off Road Equipment), are certified to operate on regular unleaded gasoline, and may include the following emission control systems: (EM) Engine Modifications and (TWC) Three-Way Catalyst (if so equipped).

SAFETY INFORMATION

IMPORTANT SAFETY INFORMATION

Most accidents with engines can be prevented if you follow all of the instructions in this manual and on the engine. Some of the most common hazards are discussed below, along with the best way to protect yourself and others.

Owner Responsibilities

- These engines are designed to provide safe and dependable service if operated according to instructions. Read and understand this owner's manual before operating the engine. Failure to do so could result in personal injury or equipment damage.
- Know how to stop the engine quickly, and understand the operation of all controls. Never permit anyone to operate the engine without proper instructions.
- Do not allow children to operate the engine. Keep children and pets away from the area of operation.

WHEN ADDING FUEL



Warning: Gasoline and its vapors are extremely flammable and explosive.

Warning: Fire or explosion can cause severe burns or death.

- Turn engine OFF and let engine cool at least 2 minutes before removing gas cap.
- Fill fuel tank outdoors or in well-ventilated area.
- Do not overfill fuel tank. Fill tank to approximately 1-1/2 inches below top of neck to allow for fuel expansion.
- Keep gasoline away from sparks, open flames, pilot lights, heat, and other ignition sources.
- Check fuel lines, tank, cap, and fittings frequently for cracks or leaks. Replace if necessary.

WHEN STARTING ENGINE

- Make sure spark plug, muffler, fuel cap and air cleaner are in place.
- Do not crank engine with spark plug removed.
- If fuel spills, wait until it evaporates before starting engine.
- If engine floods, set choke to OPEN/RUN position, place throttle in FAST and crank until engine starts.

WHEN OPERATING EQUIPMENT

- Do not tip engine or equipment at angle which causes gasoline to spill.
- Do not choke carburetor to stop engine.

WHEN TRANSPORTING EQUIPMENT

Transport with fuel tank EMPTY

WHEN STORING GASOLINE OR EQUIPMENT WITH FUEL IN TANK

Store away from furnaces, stoves, water heaters or other appliances that have pilot light or other ignition source because they can ignite gasoline vapors.



Warning: Starting an engine creates sparking.

Warning: Sparking can ignite nearby flammable gases. Explosion and fire could result.

- If there is gasoline leakage in area, do not start engine.
- Do not use pressurized starting fluids because vapors are flammable.



Warning: Rapid retraction of starter cord will pull hand and arm toward engine faster than you can let go.

Warning: Broken bones, fractures, bruises or sprains could result.

- When starting engine, pull cord slowly until resistance is felt, then pull rapidly.
- Remove all external equipment/engine loads before starting engine.
- Direct coupled equipment components such as, but not limited to, blades, impeller, pulleys, sprockets, etc., must be securely attached.



Warning: Internal combustion engines give off carbon monoxide, an odorless, colorless, poison gas.

- Always start and run engine outdoors.
- Never start or run engine in an enclosed area, even if doors or windows are open.



Warning: Rotating parts can contact or entangle hands, feet, hair, clothing, or accessories. Traumatic amputation or severe laceration can result.

- Operate equipment with guards in place. Keep hands and feet away from rotating parts. Tie up long hair and remove jewelry.
- Do not wear loose-fitting clothing, dangling drawstrings or items that could become caught.

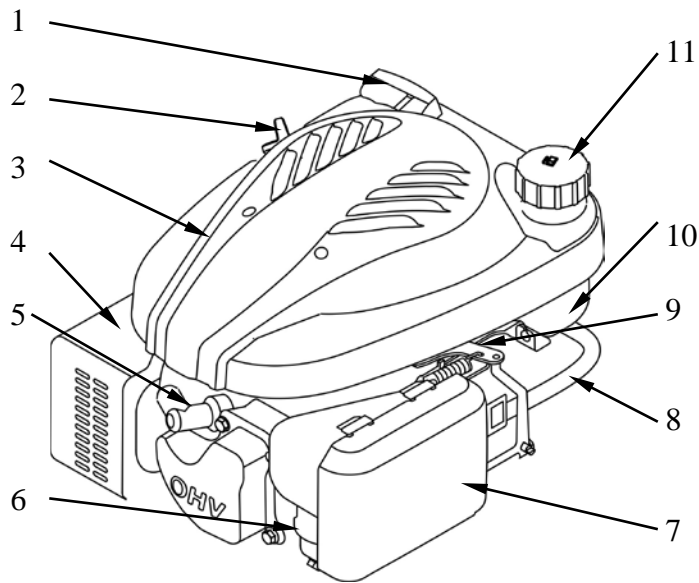


Warning: Running engines produce heat. Engine parts, especially muffler, become extremely hot. Severe thermal burns can occur on contact. Combustible debris, such as leaves, grass, brush, etc. can catch fire.

- Allow muffler, engine cylinder and fins to cool before touching.
- Remove accumulated combustibles from muffler area and cylinder area.

KNOWING YOUR ENGINE

Please use the illustration below to familiarize yourself with the location and function of the components that control of your engine.



- | | | | |
|---|-----------------------|----|---------------|
| 1 | Recoil Starter handle | 7 | Air filter |
| 2 | Oil dipstick | 8 | Fuel line |
| 3 | Engine cover | 9 | Throttle |
| 4 | Muffler | 10 | Fuel tank |
| 5 | Spark plug | 11 | Fuel tank cap |
| 6 | Carburetor | | |

ENGINE PREPARATION

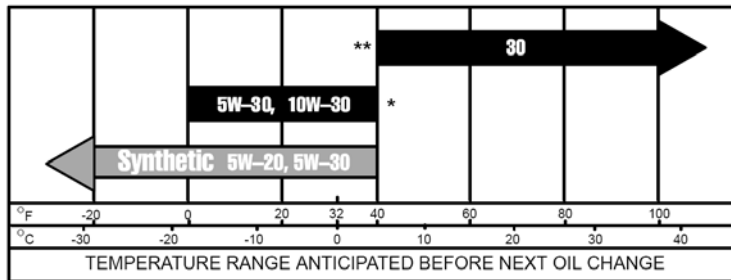
The following section describes steps necessary to prepare the engine for use. If after reading this section, you are unsure about how to perform any of the steps please call (800) 791-9458 Mon-Fri 9-5 EST for customer service. Failure to perform these steps properly can damage the engine or shorten its lifespan.

ADD OIL

The engine is shipped without oil. User must add the proper amount of oil before operating the engine for the first time. The oil capacity of the engine crankcase is 17 fl.oz. For general use (above 40° F), we recommend 30W, 4-stroke engine oil.

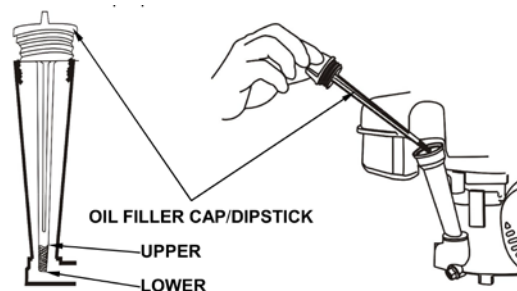
ENGINE OIL RECOMMENDATIONS

Oil is a major factor affecting performance and service life. We recommend the use of a good detergent automotive oil. 30W is recommended for most applications. Other viscosity grades shown below may be used when the average temperature in your area become extreme. Synthetic formulation is also acceptable for use in these engines.



To add oil, follow these steps:

1. Make sure the engine is on a level surface. Tilting the engine to assist in filling will cause oil to flow into engine areas and will cause damage.
2. Remove the dipstick from the engine.
3. Add oil slowly. Do not overfill.
4. To check the oil level, wipe the dipstick with a clean rag. Insert the dipstick into the oil fill opening without screwing it in. Remove the dipstick to check the oil mark.
5. Slowly add more oil and repeat step 4 until the oil mark reaches to the upper mark of the dipstick. Do not overfill the crankcase.
6. Check for oil leaks. Tighten dipstick firmly.



ADD GASOLINE



WARNING: This engine may emit highly flammable and explosive gasoline vapors, which can cause severe burns or even death if ignited. A nearby open flame can lead to explosion even if not directly in contact with gasoline.

Use fresh (within 30 days from purchase), lead-free gasoline with a minimum of 87 octane rating. Do not mix oil with gasoline.

To add gasoline, follow these steps:

1. Make sure the engine is on a level surface.
2. Unscrew fuel cap and set aside. **NOTE:** The fuel cap may be tight and hard to unscrew.
3. Slowly add unleaded gasoline to the fuel tank. Be careful not to overfill. The capacity of the fuel tank is 0.26 gallon. **NOTE:** Do not fill the fuel tank to the very top. Gasoline will expand and spill over during use even with the fuel cap in place.
4. Reinstall fuel cap and wipe clean any spilled gasoline with a dry cloth.

IMPORTANT:

- Never use an oil/gasoline mixture.
- Never use old gasoline.
- Avoid getting dirt or water into the fuel tank.
- Gasoline can age in the tank and make starting difficult. Never store engine for extended periods of time with fuel in the tank or the carburetor.

MAINTENANCE

Proper routine maintenance of this engine will help prolong the life of the machine.

Always observe safety rules when performing any maintenance.

The warranty on this product does not cover items that have been subjected to operator abuse or negligence. To receive full valve from warranty, operator must maintain the engine as instructed here.

Changing of engine-governed speed will void engine warranty.

All adjustments should be checked at least once each season.

Periodically check all fasteners and make sure these are tight.



Warning: Always stop engine, allow engine to cool, disconnect spark plug wire before performing any type of maintenance on your machine.

REGULAR SERVICE PERIOD Performed at every indicated month or operating hour interval, whichever comes first.		Before Each use	First month or 5 Hrs.	Every 3 months or 25 Hrs.	Every 6 months or 50 Hrs.	Every year or 100 Hrs.
ITEM						
Engine oil	Check level	○				
	Change		○		○ (1)	
Air cleaner	Check	○				
	Clean			○ (2)		
	Replace					○☆
Spark plug	Check-Clean				○	
	Replace					○
Flywheel brake pad	Check				○	
Valve clearance	Check-Adjust					○ (3)
Combustion chamber	Clean	After every 100 Hrs. (3)				
Fuel line	Check	Every 2 years (Replace if necessary) (3)				

☆ Replace the paper element type only.

(1) Change engine oil every 25 hours when used under heavy load or in high ambient temperatures.

(2) Clean more often under dusty conditions or when airborne debris is present. Replace air cleaner parts, if very dirty.

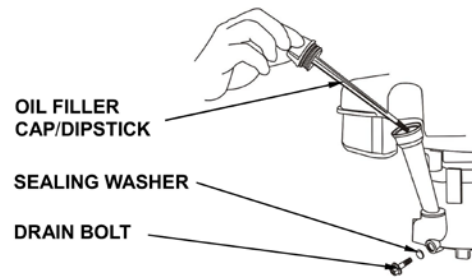
(3) These items should be serviced by your servicing dealer unless you have the proper tools and are mechanically proficient.

CAUTION: Used oil is a hazardous waste product. Dispose of used oil properly. Do not discard with household waste. We suggest you take used oil in a sealed container to your local recycling center or service station for reclamation.

CHANGE ENGINE OIL

Drain the used oil while the engine is warm. Warm oil drains quickly and completely.

1. Place a suitable container below the engine to catch the used oil, and then remove the filler cap/dipstick, the drain bolt and sealing washer.
2. Allow the used oil to drain completely, and then reinstall the drain bolt and sealing washer, and tighten it securely.
3. With the engine in a level position, fill to the upper limit mark on the dipstick with the recommended oil.
4. Reinstall the oil filler cap/dipstick securely.



CAUTION: Running the engine with a low oil level can cause engine damage.

AIR CLEANER

Remove the air cleaner cover and inspect the filter. Clean or replace dirty filter elements. Always replace damaged filter elements.

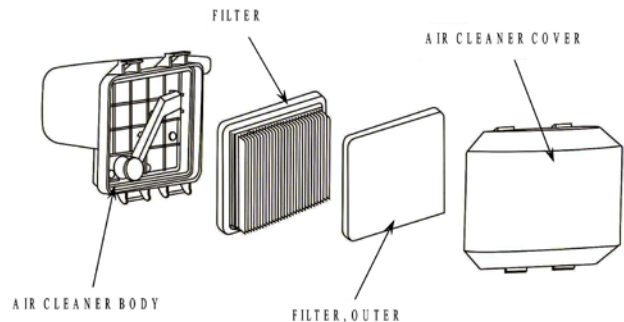
CAUTION: A dirty air filter will restrict air flow to the carburetor, reducing engine performance. If you operate the engine in very dusty areas, clean the air filter more often than specified in the MAINTENANCE SCHEDULE.

Inspection

1. Press the latch tabs on the air cleaner cover. Check the filter to be sure it is clean and in good condition.
2. Reinstall the filter and air cleaner cover.

Cleaning

1. Tap the paper filter on a hard surface a few times to remove dirt. Alternatively, you can blow compressed air (less than 30 PSI) through the filter from the clean side that faces the engine. Never attempt to brush the dirt from and paper air filter. This will only force dirt deeper into the fibers.
2. If the filter appears to be very dirty, replacement is generally the best option.
3. Wipe dirt from the air cleaner body and cover it using a moist rag. Be careful to prevent dirt from entering the air duct that leads to the carburetor.

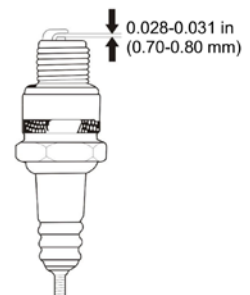


SPARK PLUG

Recommended spark plugs: E7RTC or other equivalents.

CAUTION: An incorrect spark plug can cause engine damage.

1. Disconnect the spark plug cap, and remove any dirt from around the spark plug area.
2. Remove the spark plug with a spark plug wrench.
3. Inspect the spark plug. Replace it if the electrodes are worn, or if the insulator is cracked or chipped.
4. Measure the spark plug electrode gap with a suitable gauge. The gap should



be 0.028 - 0.031 in (0.70 - 0.80 mm). Correct the gap, if necessary, by carefully bending the side electrode.

5. Install the spark plug carefully, by hand, to avoid cross-threading.
6. After the spark plug seats, tighten with a spark plug wrench to compress the water. If reinstalling the used spark plug, tighten 1/8 - 1/4 turn after the spark plug seats. If installing a new spark plug, tighten 1/2 turn after the spark plug seats.

CAUTION: A loose spark plug can overheat and damage the engine. Over tightening the spark plug can damage the threads in the cylinder head.

7. Attach the spark plug cap.

STORAGE/ TRANSPORTING

Storage Preparation

Proper storage preparation is essential for keeping your engine trouble free and easy to start. The following steps will help to keep rust and corrosion from impairing your engine's function and appearance, and will make the engine easier to start after storage.

Cleaning

If the engine has been running, allow it to cool for at least half an hour before cleaning. Clean all exterior surfaces, touch up any damaged paint, and coat other areas that may rust with a light film of oil.

CAUTION: Using a garden hose or pressure washing equipment can force water into the air cleaner or muffler opening. Water in the air cleaner will soak the air filter, and water that passes through the air filter or muffler can enter the cylinder, causing damage.

Water contacting a hot engine can cause damage. If the engine has been running, allow it to cool for at least half an hour before washing.

Gasoline

Gasoline will oxidize and deteriorate in storage. Old gasoline will cause hard starting, and leaves gum deposits that clog the fuel system. If the gasoline in your engine deteriorates during storage, you may need to have the carburetor and other fuel system components serviced or replaced.

The length of time that gasoline can be left in your fuel tank and carburetor without causing functional problems will vary with such factors as seasonal blend, your storage temperatures, and whether the fuel tank is partially or completely filled. The air in a partially filled fuel tank promotes fuel deterioration. Very warm storage/temperatures accelerate fuel deterioration. Fuel deterioration problems may occur within a few months, or even less if the gasoline was not fresh when you filled the fuel tank.

The Limited Warranty does not cover damage to fuel system or engine performance problems resulting from improper off season storage or preparation.

You can extend fuel storage life by adding a fuel stabilizer that is formulated for that purpose, or you can avoid fuel deterioration problems by draining the fuel tank and carburetor.

ADDING A FUEL STABILIZER TO EXTEND FUEL STORAGE LIFE

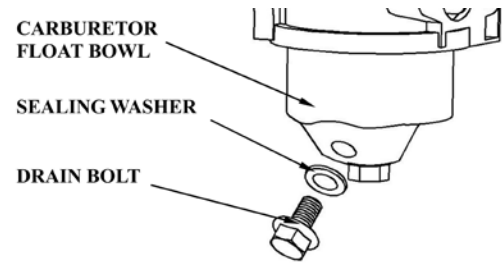
When adding a fuel stabilizer, fill the fuel tank with fresh gasoline. If this container is left only partially filled, air in the tank will accelerate fuel deterioration during storage. If you keep a container of gasoline for refueling, be sure that it contains only fresh gasoline treated with stabilizer.

1. Add fuel stabilizer following the manufacturer's instructions.

2. After adding a fuel stabilizer, run the engine outdoors for 10 minutes to be sure that treated gasoline has replaced the untreated gasoline in the carburetor.

DRAINING THE FUEL TANK AND CARBURETOR

1. Place a gasoline approved container below the carburetor.
2. Use a funnel to avoid spilling fuel on the ground.
3. Remove the drain bolt and sealing washer from the carburetor float bowl.
4. Once the fuel has drained into the container, reinstall the drain bolt and sealing washer. Tighten them securely.



Storage Precautions

1. Replace the engine oil.
2. Remove the spark plugs.
3. Pour a tablespoon (5-10 cc) of clean engine oil into the cylinder.
4. Pull the starter rope several times to distribute the oil in the cylinder.
5. Reinstall the spark plugs.
6. Pull the starter rope slowly until resistance is felt. This will close the valves so moisture cannot enter the engine cylinder. Return the starter rope gently.
7. With the engine and exhaust system cool, cover the engine to keep out dust. A hot engine and exhaust system can ignite or melt some materials. Do not use sheet plastic as a dust cover. A nonporous cover will trap moisture around the engine, promoting rust and corrosion.

Removal from Storage

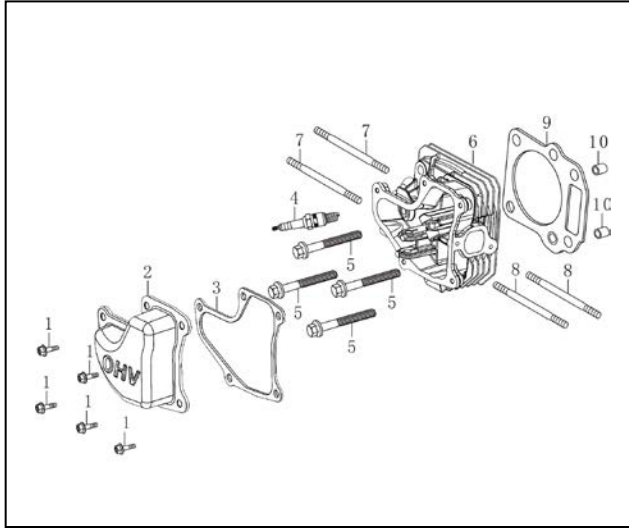
If the fuel was drained during storage preparation, fill the tank with fresh gasoline. If you keep a container of gasoline for refueling, be sure that it contains only fresh gasoline. Gasoline oxidizes and deteriorates over time, causing hard starting.

If the cylinders were coated with oil during storage preparation, the engine may smoke briefly at startup. This is normal.

Transporting

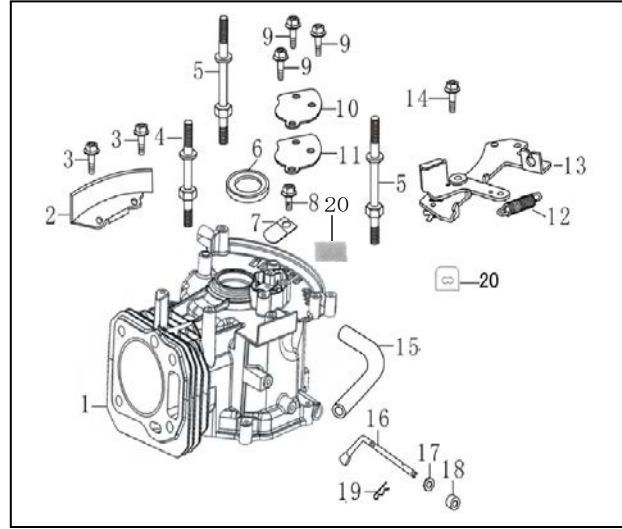
If the engine has been running, please allow it to cool for at least 15 minutes before loading the power equipment on the transport vehicle. A hot engine and exhaust system can burn you, and potentially can ignite some materials. It is also important to keep the engine upright and level when transporting to reduce the leakage of gasoline and oil.

EXPLODED VIEW AND PARTS LIST



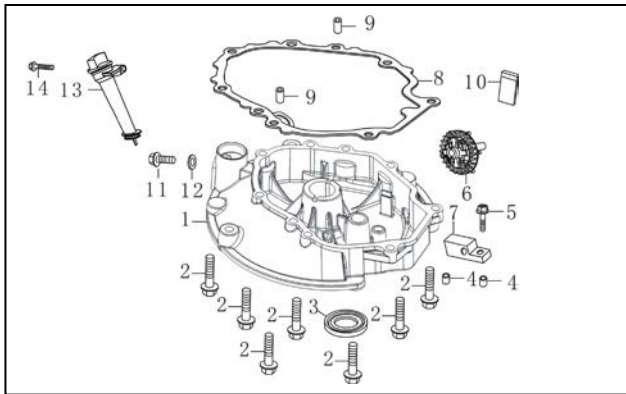
CYLINDER HEAD

Item	Stock #	Description	Qty
1	380020128-0001	BOLT	5
2	120230098-0001	COVER COMP. HEAD	1
3	120250037-0001	PACKING, HEAD COVER	1
4	270960029-0001	PLUG, SPARK	1
5	380140339-0001	BOLT	4
6	120080549-0001	HEAD COMP, CYLINDER	1
7	380180101-0001	BOLT, STUD	2
8	380180144-0001	BOLT, STUD	2
9	120150195-0001	GASKET, CYLINDER	1
10	380600117-0001	PIN, DOWEL	2



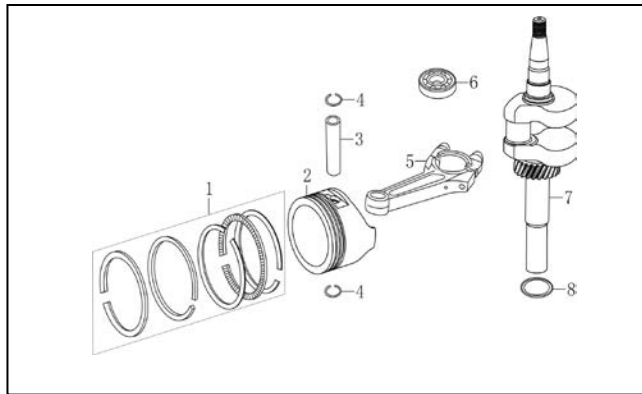
CRANK CASE

Item	Stock #	Description	Qty
1	110810149-0001	CRANK CASE	1
2	160200048-0001	SHIELD, TANK SIDE	1
3	380140013-0005	BOLT, FLANGE	2
4	380850002-0001	BOLT, STUD	1
5	380850006-0001	BOLT, STUD	2
6	380650335-0001	OIL SEAL	1
7	140250006-0001	REED VALVE	1
8	380140037-0003	BOLT, FLANGE M6x10	1
9	380140441-0001	BOLT, FLANGE M6x14	3
10	110840010-0001	CAP, BREATHER CHAMBER	1
11	110850010-0001	PACKING, BREATHER CHAMBER	1
12	381140465-0001	TENSION SPRING	1
13	293030012-0001	FLYWHEEL BRAKE	1
14	380140086-0002	BOLT, FLANGE	1
15	380740521-0001	TUBE, BREATHER	1
16	171630010-0001	SHAFT, GOVERNOR ARM	1
17	380450527-0001	WASHER	1
18	380650338-0001	OIL SEAL	1
19	381350004-0001	PIN, LOCK	1
20	380930064-0001	LOCATION WIRE NAIL	1



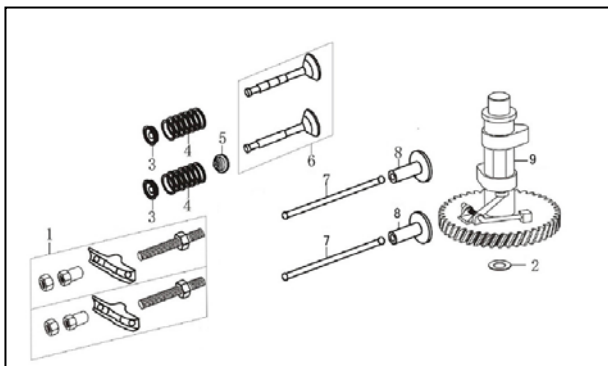
CRANK CASE COVER

Item	Stock #	Description	Qty
1	110820038-0001	CASE COVER	1
2	380140054-0006	BOLT, FLANGE	7
3	380650347-0001	OIL SEAL	1
4	380600121-0001	PIN, DOWEL	2
5	380140077-0005	BOLT, FLANGE	1
6	174280002-0001	GOVERNOR COMP	1
7	171640003-0001	PLATE, GOVERNOR HOLDER	1
8	110830053-0001	PACKING, CASE COVER	1
9	380600120-0001	OCATION PIN	2
10	150570002-0001	RUBBER, OIL DEFLECTOR	1
11	110260025-0001	BOLT, DRAIN PLUG	1
12	380450514-0001	WASHER	1
13	110690016-0002	OIL DIPSTICK	1
14	380140100-0003	BOLT, FLANGE	1



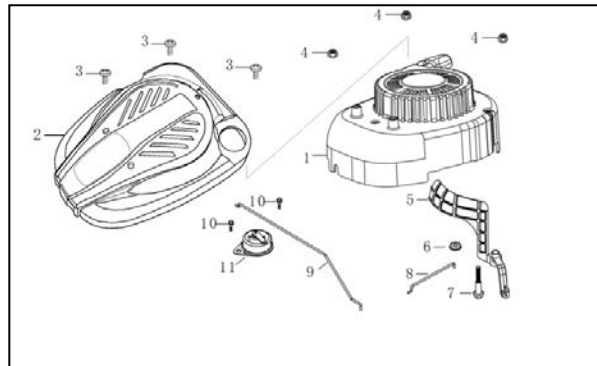
CRANKSHAFT/PISTON

Item	Stock #	Description	Qty
1	130070150-0001	RING SET	1
2	130030170-0001	PISTON	1
3	130060030-0001	PIN.PISTON	1
4	380560055-0001	CLIP, PISTON PIN	2
5	130150051-0001	ROD ASSY., CONNECTING	1
6	380630137-0002	EDDP GROOVE BALL BEAEING	1
7	130290107-0001	CRANKSHAFT COMP	1
8	380450518-0001	WASHER	1



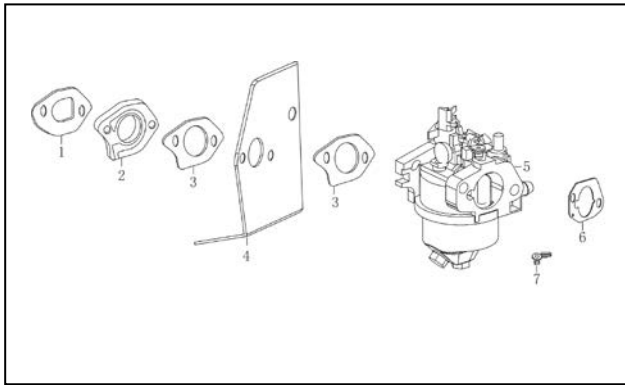
CAMSHAFT

Item	Stock #	Description	Qty
1	140450086-0001	ARM, VALVE ROCKER	1
2	380450534-0001	WASHER	1
3	140380020-0001	RETAINER, VALVE SPRING	2
4	140340022-0001	SPRING, VALVE	2
5	140400016-0001	SEAL, VALVE STEM	1
6	500550067-0001	VALVE ASSY.	1
7	140670029-0001	ROD, PUSH	2
8	140690002-0001	LIFTER	2
9	140020105-0001	CAMSHAFT ASSY.	1

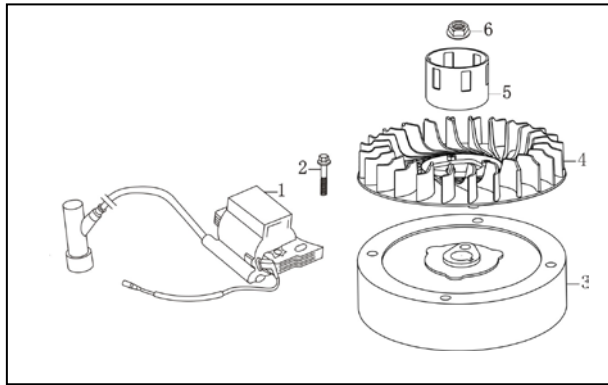


STARTER

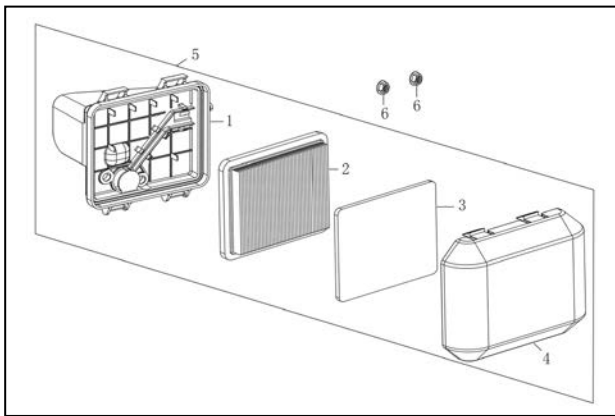
Item	Stock #	Description	Qty
1	193490225-0001	STARTER SUBASSEMBIY	1
2	193690016-0004	HOOD, FAN COVER	1
3	380200008-0005	SCREW, PAN	3
4	380370066-0001	NUT, FLANGE	3
5	173910003-0001	LAMINA,CONTEOL THROTTLE	1
6	141140003-0001	DUST CAP	1
7	380020090-0001	HEXAGON SHAFT SHOULDER BOLT	1
8	171650021-0001	CHOKE WALVE PULL ROD	1
9	171650022-0001	CHOKE WALVE PULL ROD	1
11	171470010-0001	CONTROL COMPONENTS OF CHOKE	1



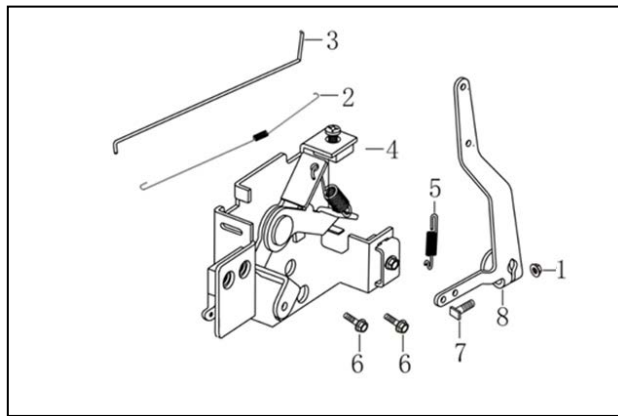
CARBURETOR			
Item	Stock #	Description	Qty
1	170430155-0001	PACKING, INSULATOR	1
2	170440079-0001	INSULATOR, CARBURETOR	1
3	170430147-0001	PACKING, CARBURETOR	2
4	170450001-0001	INSULATOR, CARBURETOR	1
5	170021144-0001	CARBURETOR	1
6	170430133-0001	GASKET, AIR CLEANER	1
7	173090001-0001	LOCKER OF CHOKE VALVE PULL ROB	1



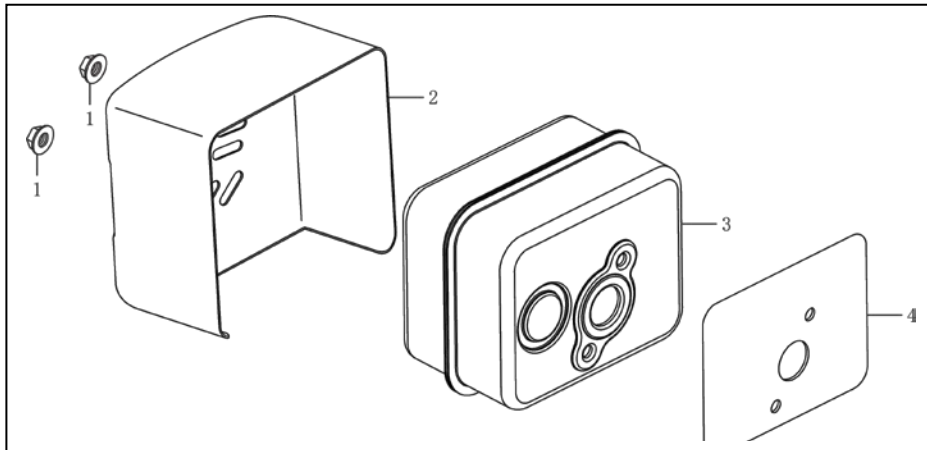
FLYWHEEL/Ignition Comp			
Item	Stock #	Description	Qty
1	270920286-0001	COIL ASSY., IGNITION	1
2	380140086-0002	BOLT, FLANGE	1
3	270020096-0001	FLYWHEEL COMP	1
4	160180015-0001	FAN, COOLING	1
5	193590005-0001	PULLEY, STARTER	1
6	380370051-0001	NUT, SPECIAL	1



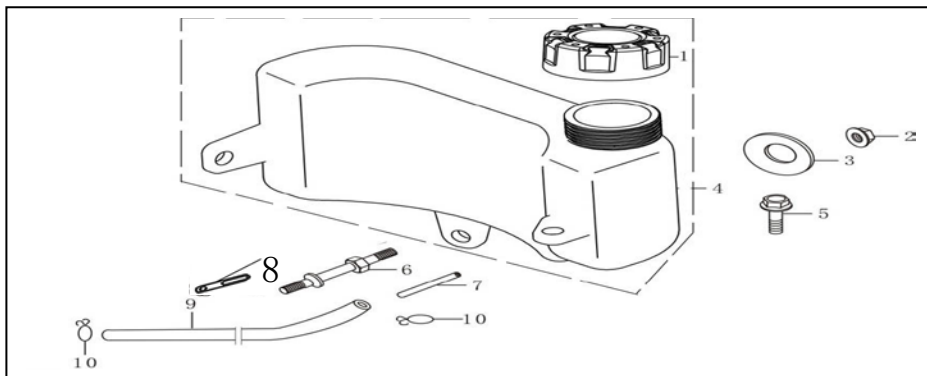
AIR CLEANER			
Item	Stock #	Description	Qty
1	180280064-0002	ELBOW, COMP AIR CLEANER	1
2	180130178-0001	ELEMENT, AIR CLEANER	1
3	180130157-0001	ELEMENT, AIR CLEANER	1
4	180070175-0001	COVER, AIR CLEANER	1
5	180020614-0002	AIR CLEANER ASSY	1
6	380370066-0001	NUT, FLANGE	2



CONTROL SYSTEM			
Item	Stock #	Description	Qty
1	380370066-0001	NUT, FLANGE M6	1
2	171610003-0001	SPRING, THROTTLE RETURN	1
3	171590018-0001	ROD, GOVERNOR	1
4	171680047-0001	LIFTER, VALVE	1
5	171600018-0001	SPRING, GOVERNOR	1
6	380140067-0003	BOLT, FLANGE M6x12	2
7	380250002-0001	BOLT, GOVERNOR ARM	1
8	171620015-0003	ARM, GOVERNOR	1



MUFFLER			
Item	Stock #	Description	Qty
1	380370048-0001	NUT, FLANGE	2
2	180960035-0001	PROTECTOR COVER, MUFFLER	1
3	180571283-0001	MUFFLER ASSY.	1
4	180660065-0001	GASKET, MUFFLER	1



FUEL TANK			
Item	Stock #	Description	Qty
1	170870112-0001	CAP COMP., FUEL FILLER	1
2	380370048-0001	NUT, FLANGE	1
3	380450444-0002	WASHER	1
4	170490136-0001	FUEL TANK COMP.	1
5	380140013-0005	BOLT, FLANGE	1
6	380850003-0001	BOLT, STUD	1
7	170010017-0001	STRAINER, FUEL	1
8	380940346-0001	CABLE CLEAT	1
9	380750425-0001	TUBE, FUEL	1
10	380960120-0004	LOOP, TUBE	2

TWO (2) YEARS LIMITED WARRANTY

PowerSmart is committed to building equipment that will provide years of dependable service. Our warranties are consistent with our commitment and dedication to quality.

TWO (2) YEARS LIMITED WARRANTY OF POWER SMART PRODUCTS FOR HOME USE.

PowerSmart ("Seller") warrants to the original purchaser only, that all PowerSmart consumer power tools will be free from defects in material or workmanship for a period of two (2) years from date of purchase. If the tool(s) is used while providing professional or commercial services, the warranty coverage shall be for a maximum of (90) days.

SELLER'S SOLE OBLIGATION AND YOUR EXCLUSIVE REMEDY under this Two (2) Years Limited Warranty and, to the extent permitted by law, any warranty or condition implied by law, shall be the re-pair or replacement of parts, without charge, which are defective in material or workmanship and which have not been misused, carelessly handled, or improperly repaired, by person(s) other than an Authorized Seller or Service Center.

Please be aware that normal wear parts are not covered this warranty. This includes drive belts, blades and grass bags. Carburetor issues, and/or other damage found to be the result of stale, contaminated or compromised fuel, is not covered under this limited warranty.

To make a claim under this Limited Warranty, you must return the entire power tool product; transportation prepaid, to PowerSmart. The owner must include a legible copy of the original receipt, which shall list the date of purchase, along with the company's name where the product was purchased.

THIS LIMITED WARRANTY DOES NOT APPLY TO ANY ACCESSORY ITEMS INCLUDED WITH THE TOOL SUCH AS CIRCULAR SAW BLADES OTHER RELATED ITEMS OR TO ANY REPLACEMENT PARTS LISTED UNDER MAINTENANCE.

ANY IMPLIED WARRANTIES SHALL BE LIMITED IN DURATION TO TWO (2) YEARS FROM DATE OF PURCHASE. SOME STATES IN THE U.S. AND SOME CANADIAN PROVINCES DO NOT ALLOW LIMITATIONS ON HOW LONG AN IMPLIED WARRANTY LASTS, SO THE ABOVE LIMITATION MAY NOT APPLY TO YOU.

IN NO EVENT SHALL SELLER BE LIABLE FOR ANY INCIDENTAL OR CONSEQUENTIAL DAMAGES (INCLUDING BUT NOT LIMITED TO LIABILITY FOR LOSS OF PROFITS) ARISING FROM THE SALE OR USE OF THIS PRODUCT. SOME STATES IN THE U.S. AND SOME CANADIAN PROVINCES DO NOT ALLOW THE EXCLUSION OR LIMITATION OF INCIDENTAL OR CONSEQUENTIAL DAMAGES, SO THE ABOVE LIMITATION OR EXCLUSION MAY NOT APPLY TO YOU.

THIS LIMITED WARRANTY GIVES YOU SPECIFIC LEGAL RIGHTS, AND YOU MAY ALSO HAVE OTHER RIGHTS WHICH VARY FROM STATE TO STATE IN THE U.S., PROVINCE TO PROVINCE IN CANADA AND FROM COUNTRY TO COUNTRY.

For questions, comments, technical assistance or to order repair parts

Please call toll free at: 1-800-791-9458 (M-F 9am – 5pm CST)

Email: support@amerisuninc.com

PLEASE SAVE ALL OF YOUR ORIGINAL RECEIPTS. THIS WARRANTY IS VOID WITHOUT THEM.